




## Welcome


**Belinda Benassi**  
Child Welfare Services Program Manager  
CalWORKs and Child Welfare Services Linkages Coordinator

**Julie Lemen**  
Information Technology Team Senior Software Engineer



## Agenda


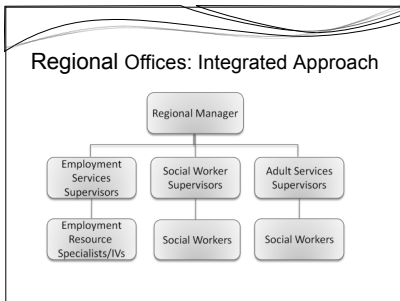
- San Luis Obispo County
  - Demographics
- Linkages in SLO County
  - One Door Model
- Data Collection Systems
  - Co-Case Management Tool
  - Linkages Database
  - CalWORKs/Emergency Response Linkages Referral Notice
  - Demonstration
- Questions




## Demographics

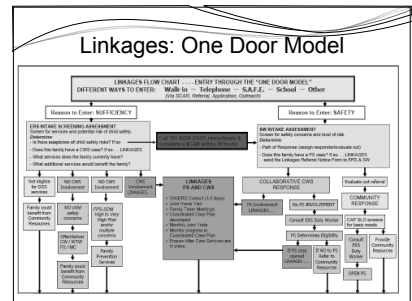
- We are a smaller, largely rural county with a total population of 269,637 residents.
  - California: \$58,925
- The poverty rate in SLO: 13.2% (2009)
  - California: 14.2% (2009)
  - Current unemployment: 9% (May 2011)
- Expensive place to live
  - Median home price: \$513,460 (Jan 2011)
  - Average 2 bedroom apartment: \$1,081/month
  - Section 8 waiting list: 1988 on the waiting list as of January 2011. The list is currently closed.

Sources: 2010 US Census, 2011 SLO Economic Profile, ca.gov, CA Association of Realtors and SLO County Housing Authority

## Participant Services and Child Welfare Services

- Participant Services Components:
  - CalWORKs/Welfare-to-Work/CalFresh/Medi-Cal
  - Foster Care/CalFresh/Medi-cal
  - General Assistance/CalFresh/Medi-cal
- Child Welfare Service Components:
  - Hotline/Intake
  - Emergency Response
  - Dependency Investigations
  - Family Maintenance/Family Reunification/Permanent Placement
  - Licensing
  - Adoptions
- Participant Services and Child Welfare Services staff are co-located in each office and Linkages is emphasized in our departmental structure.

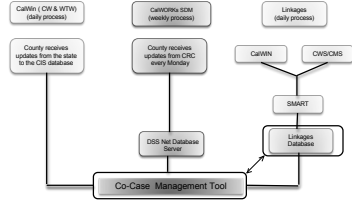


## Community Partnership and Resources

By coordinating CalWORKS & CWS, we enhance the family's ability to access other resources earlier, such as:

- Domestic Violence services
- Mental Health services
- Drug & Alcohol services
- Parent Connection
- Father Involvement groups
- Parent Mentors
- Employment Opportunities
- Housing services
- Supportive Services
- Family Advocates
- Youth support
- Transportation
- Food Bank
- In-Home care
- Counseling services
- Child & Adult care

## Data Collection Process



## Co-Case Management Tool

The Co-Case Management Tool was implemented in 08/2008. It has proven to be an invaluable resource to Participant Services staff in tracking and managing CalWORKS participants' case services and activities.

### Information collected on the Co-Case Management Tool

Case Number	CW Aid Code	Participant Name	Prof Phone	SSI	Current ES Status		
One Date	APR Date	Job Club Date	ADR Date	Monthly BTRR Date	SR Activities		
Comments	CW 60 Months Used	DBS Linkages Used	CFP Div	SDR	Last ES Update	CCM/Case Date	Case/Service Approval Date

## Data Collection



Demonstration

## Questions ??

## Thank You

Belinda Benassi  
805-781-1841  
Julie Lemen  
805-781-1613